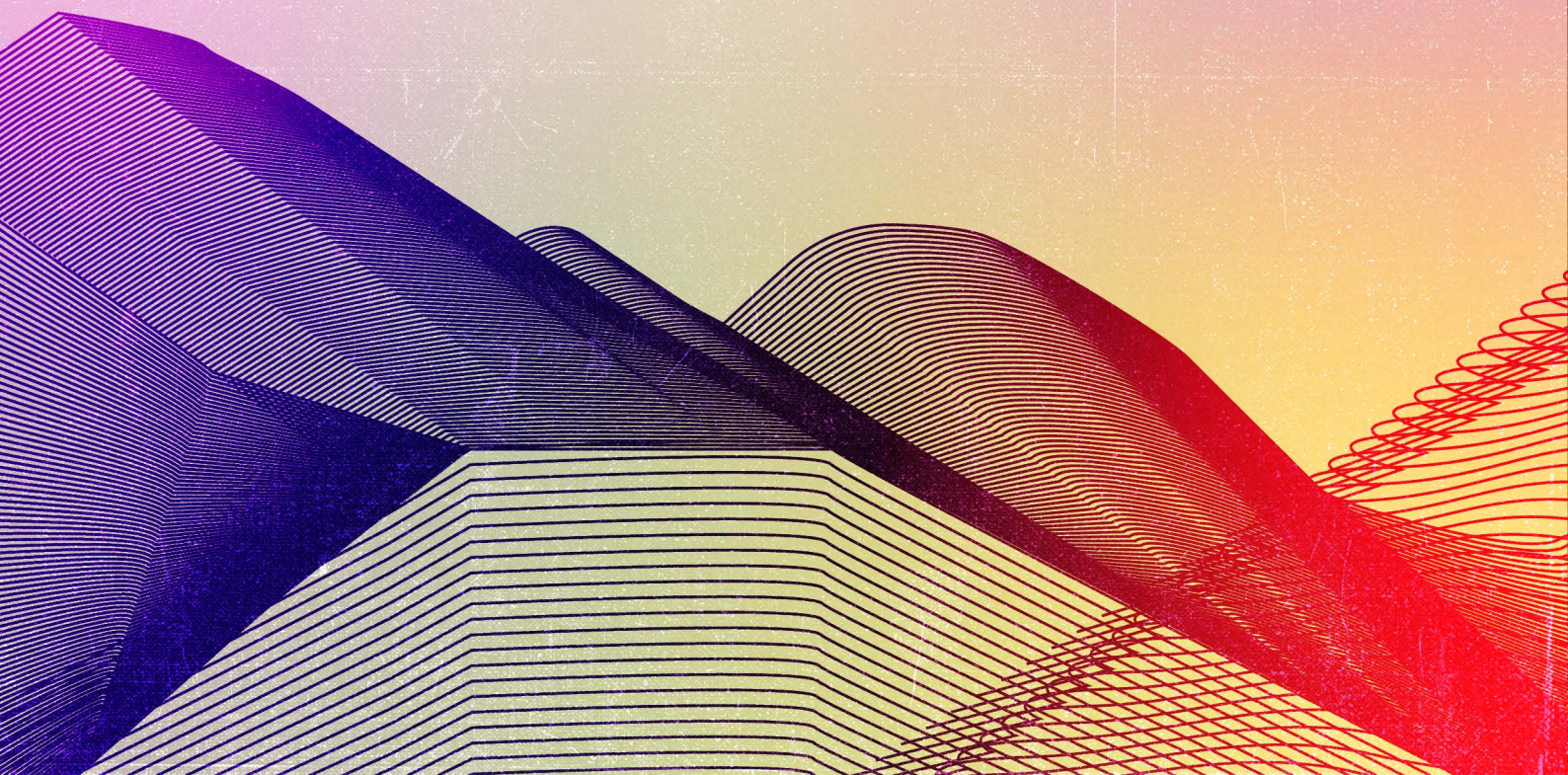


FEMINIST BY DESIGN



Not all philanthropists are content with business as usual.

For them, the Global Center for Gender Equality is building a model of intersectional feminist practices and partnerships that radically reimagines the role of philanthropy in facilitating collective pathways to change.

A critical piece of this work is **FEMINIST BY DESIGN**, where we work with philanthropists to shift mindsets, practices, and actions in order to unlock values-aligned capital to organizations, leaders, and movements advancing gender justice. Feminist by Design has a dual mission:

- to contribute to the movement to hold philanthropy accountable to women by integrating intersectional feminist design, practices, and principles into funders' thinking, giving and programming, and
- to raise money for an intersectional feminist fund that strategically corrects imbalances in women-focused philanthropy and private resourcing for feminist causes in general.

How do I align my philanthropy with intersectional feminist values?

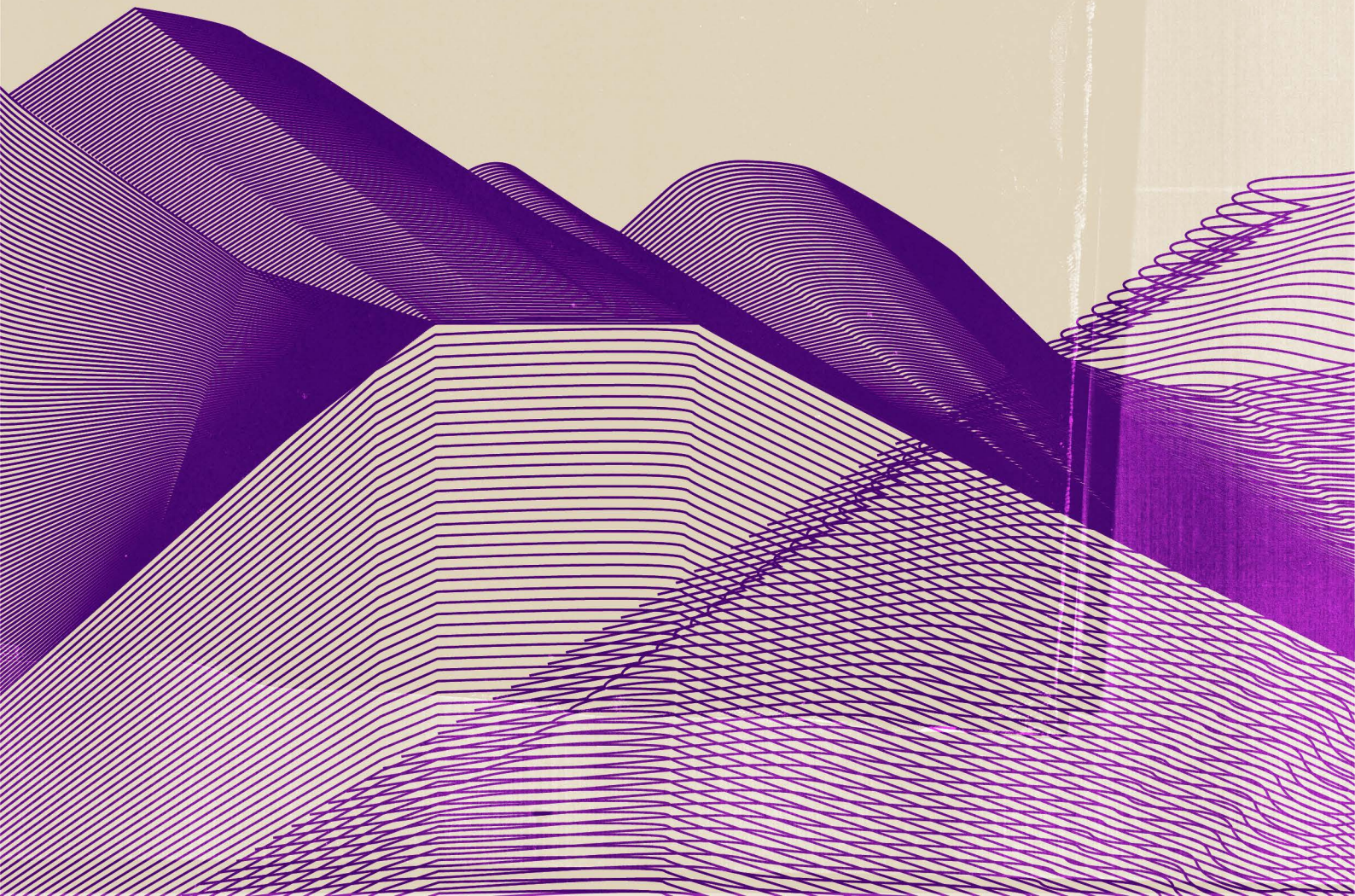
How do I interrupt the ways I participate in and benefit from systems of harm and inequality?

How do I build community with other philanthropists interested in interrupting old models of giving to collectively realize feminist goals together?

How do I cede power?

How do I support and build grassroots power to realize the feminist future we all deserve?

If these are questions you wrestle with,
we want you in **FEMINIST BY DESIGN**




FEMINIST BY DESIGN

is a membership community of intersectional feminists with wealth who are serious about building grassroots power.

We quest moonshots.

We coordinate support for feminist underdogs who need their ideas to spread and feminist disrupters who are swimming against the tide of Western, reactionary “feminism” as they confront compounding global crises.

We prioritize feminists making a dent in the world rather than the traditional way of funding safe, established, and risk-averse organizations.



Membership offers access to a world-leading team of gender equality experts who have advised on over **350** philanthropic investments and programs around the world.

FEMINIST
BY DESIGN

WHAT MAKES THIS COMMUNITY DIFFERENT?

We fund for agility and change.

We believe everyone, regardless of class, has an obligation to organize and educate others.

We believe funders should get access to feminist movement organizers through *trust*, not trusts.

We apply an anti-imperialist and racial justice lens to all gender inequality issues.

We use a values-based approach to guide giving.

We believe feminist philanthropy is an ongoing commitment to self-inquiry and practice rather than a one-time act or donation.

WHAT DO WE OFFER?



FEMINIST BY DESIGN LABS

Cutting-edge solutions in feminist design needed to make the right investments and deepen your impact

CUSTOMIZED TECHNICAL AND STRATEGIC SUPPORT

Work with our world-leading team of gender equality experts to design and implement programs, policies, and partnerships that are rooted in gender justice

A CURATED RESOURCE LIBRARY

Stay abreast of the latest trajectory, learnings, thinking, and practices in intersectional feminist philanthropy

PEER-TO-PEER COMMUNITY BUILDING

Collaborate with other funders in a safe and trusted space to grapple with core issues of power and privilege

DECOLONIAL FEMINIST FUND

Directly support frontline feminists, build grassroots power, and disrupt status quo philanthropy

BEST-IN-CLASS TRAININGS

Learn about feminist philanthropy principles and practices, as well as the root causes of top key challenges for women and threats to feminism globally

WHAT HAPPENS IF WE GET THIS RIGHT?

Members strategically upgrade their giving portfolios to meet the gaps in women-focused giving

Shared feminist giving practices globalized

Members have built knowledge, skills, and the confidence to share their learnings with peers

Members lead a gender justice project in tandem with partner members and GCFGE

Rebalance of giving within women-focused philanthropy by raising more money towards unfunded areas

International united front on feminist philanthropy with formal bases of coordination in Asia and the US in phase one

WILL YOU JOIN US?

E-mail our
Director of Feminist Philanthropy,
Khara Jabola-Carolus
< khara.jabola@gcfge.org >



**FEMINIST
BY DESIGN**